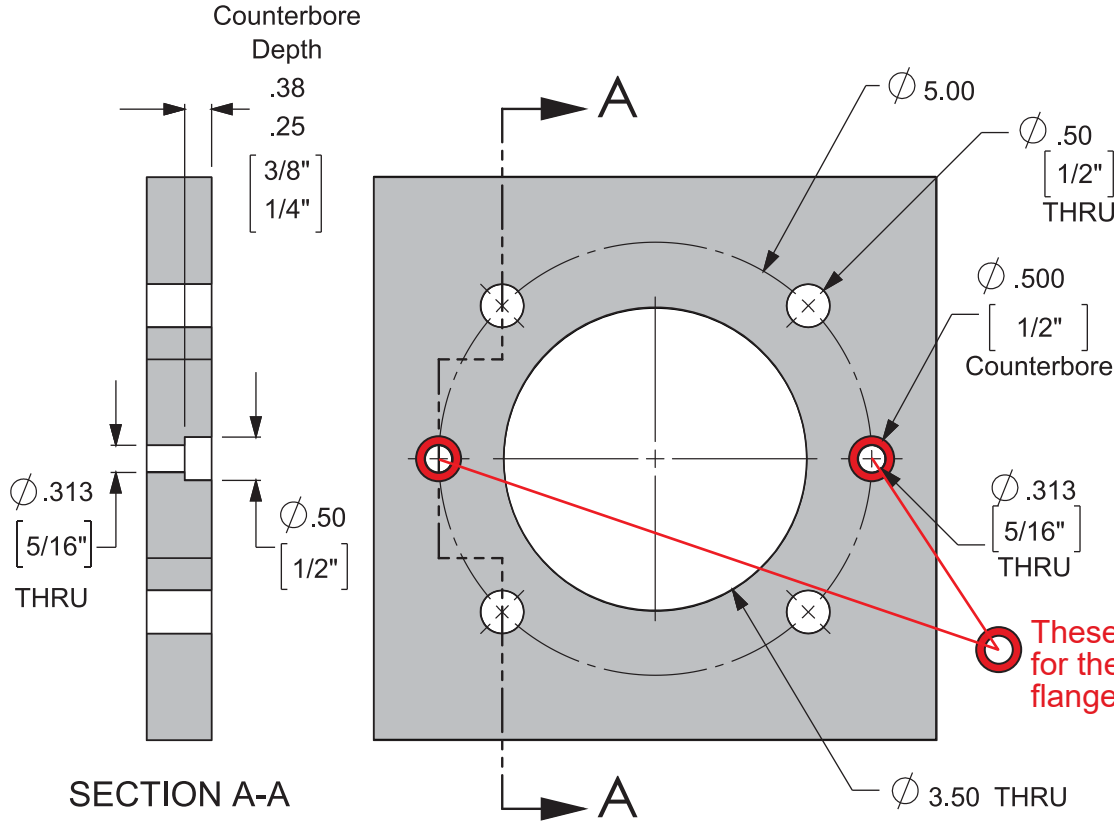




Tank Auto-Fill Installation Instructions



Preparation:

1. Tape template in the location of the Auto Fill.
2. Drill seven (7) 3/32" pilot holes.
3. Drill the 3-1/2" hole for Auto Fill with a hole saw.
4. Drill the remaining 3/32" pilot holes to 5/16"
5. Drill the four (4) 5/16" mounting hole to 1/2".
6. Counterbore the two (2) 5/16" holes to 1/2" dia. by 1/4" to 3/8" deep.

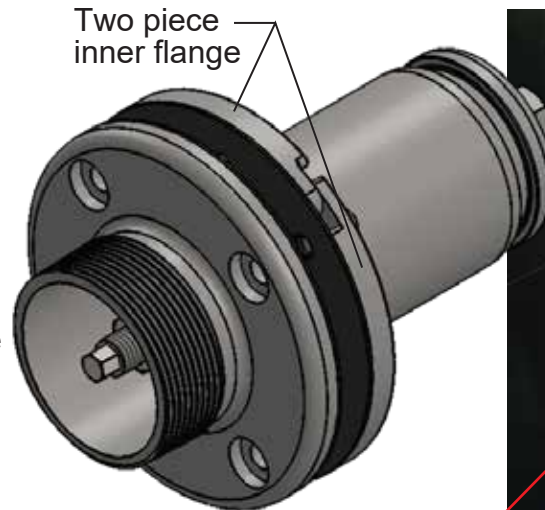
These two counter-bored holes are for the screws that secure the inner flange before installing the valve.

Note: Be sure to use a mechanical stop on the drill when drilling the counterbore. It is nearly impossible to stop the drill from going all the way will pull itself through the Poly. Cut a piece of 1/2" pipe to correct length and slide it over the drill bit to ensure that it stops at correct depth.



Installation:

1. Install one of two inner flange castings thru the 3-1/2" hole into the inside of the tank and secure in place with a screw thru one of two counter-bored holes in the tank. Wait to fully tighten.
2. Install and interlock second part of inner flange with the the first piece. secure in place with a screw thru the second counter-bored hole in tank. Align flanges and fully tighten screws.
3. Install valve with flange gasket into the tank and secure with four bolts.



This is one of two screws that hold the inner flange in place before the valve is installed.