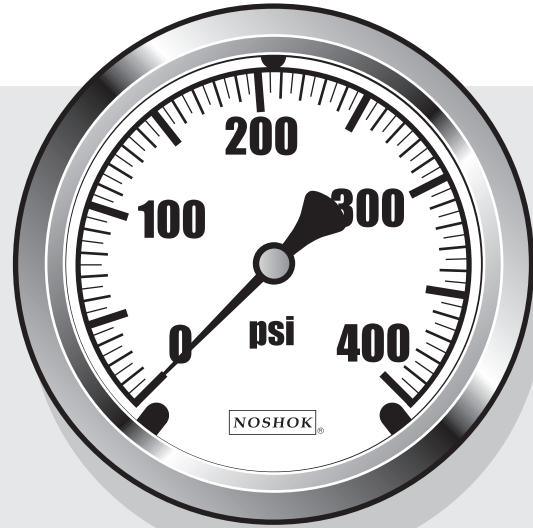


Innovative Controls Inc. Pressure Gauges



25.310.0-400



25.310.0-600

All gauges available with white markings on black background or black markings on white background



25.310.30"/400



25.310.30"/600

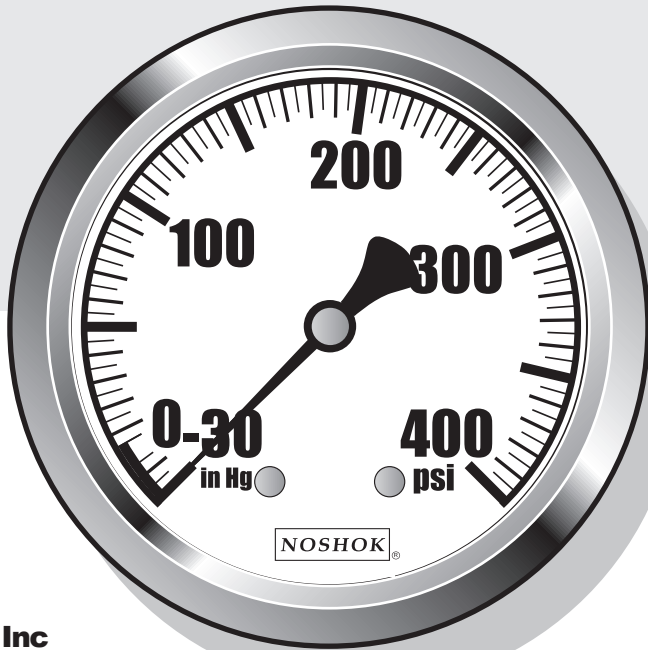


30.310.0-400

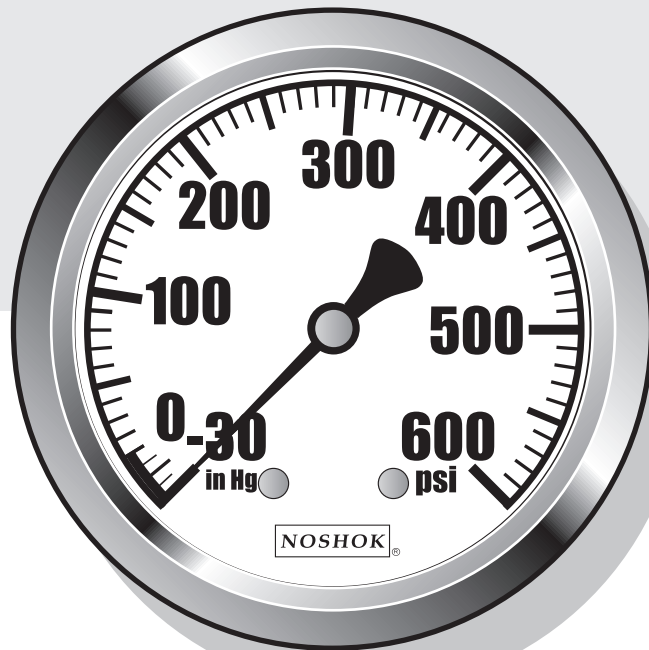


30.310.0-600

All gauges available with white markings on black background or black markings on white background



30.310.30"/400



30.310.30"/600

Innovative Controls Inc
3" Brass Case Gauges





40.310.30"/400



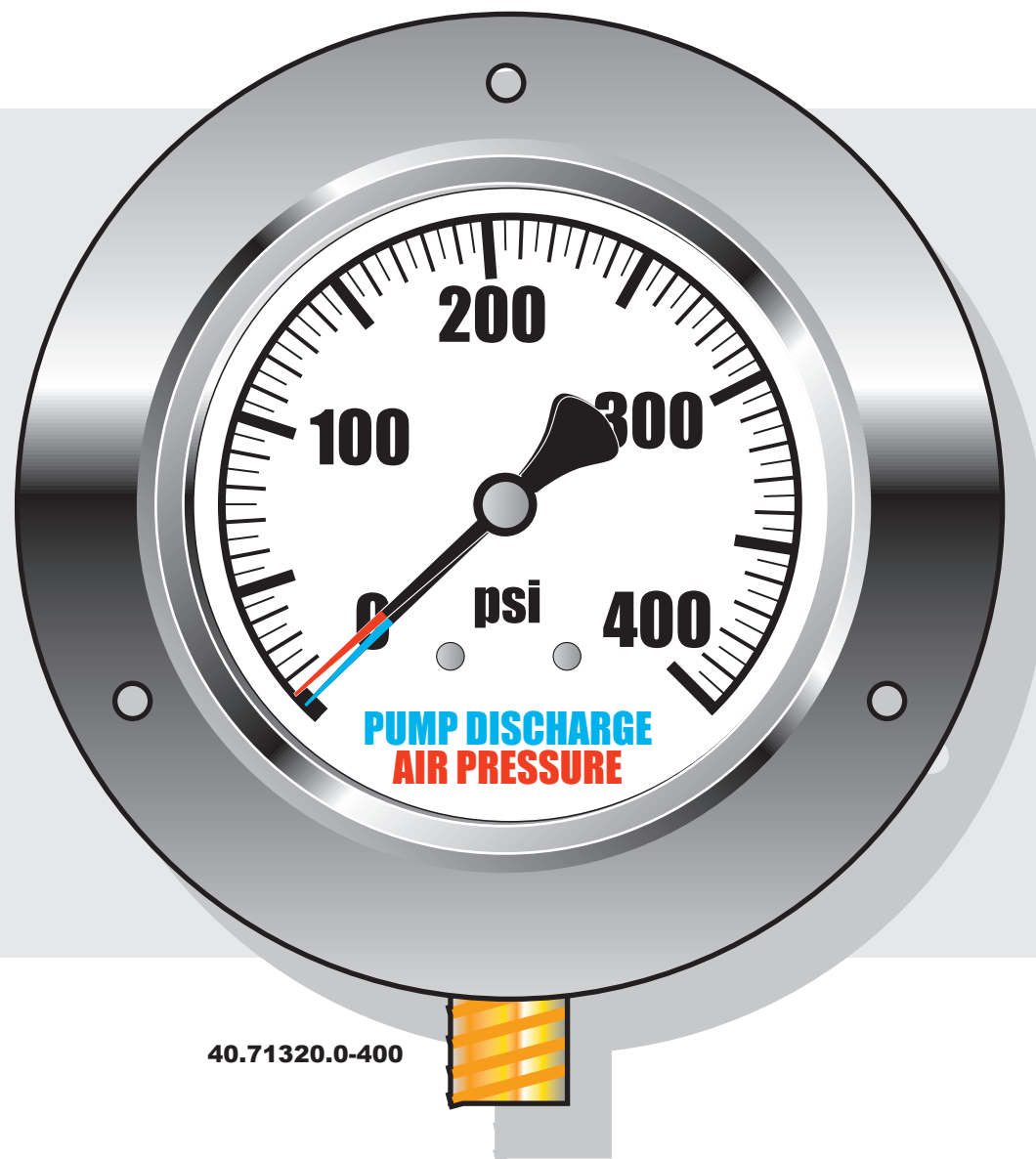
40.310.30"/600

All gauges available with white markings on black background or black markings on white background

Innovative Controls Inc
4" Brass Case Gauges



All gauges available
with white markings
on black background
or black markings on
white background



Innovative Controls Inc
4" Brass Case Duplex Gauge



All gauges available
with white markings
on black background
or black markings on
white background

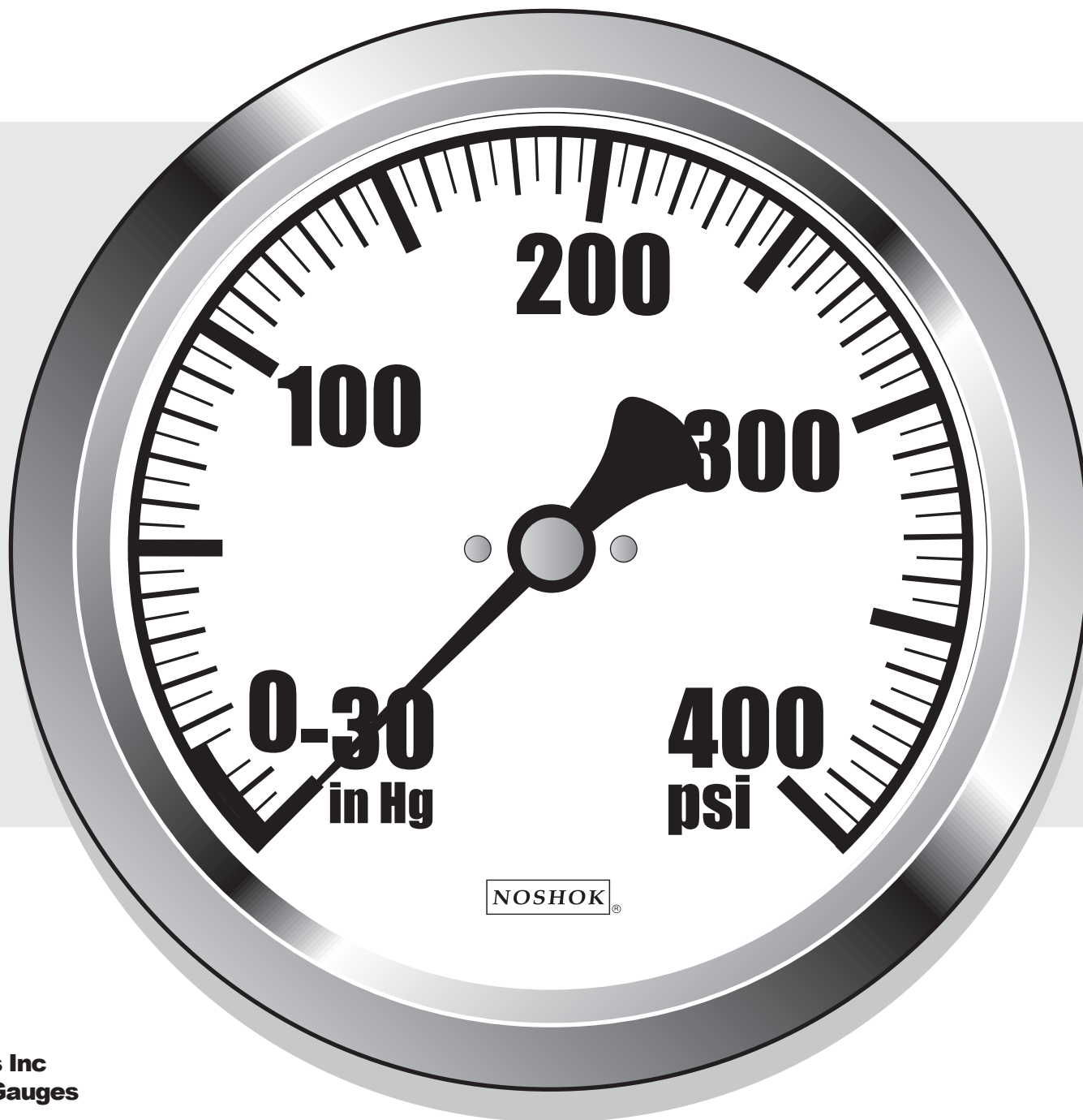


Innovative Controls Inc
6" Stainless Case Gauges

60.911.30"/600



All gauges available
with white markings
on black background
or black markings on
white background

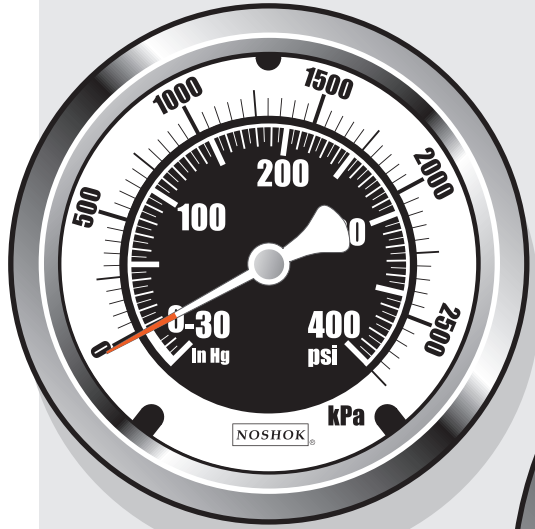


Innovative Controls Inc
6" Stainless Case Gauges

60.911.30"/400

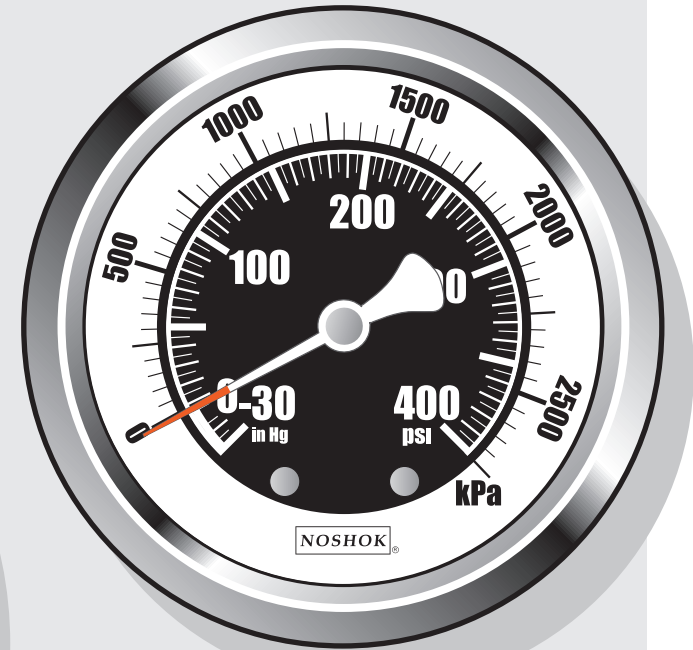


2.5" 0-400PSI with Metric Equiv.
2.5" -30-400PSI with Metric Equiv.
2.5" -30-600PSI with Metric Equiv.

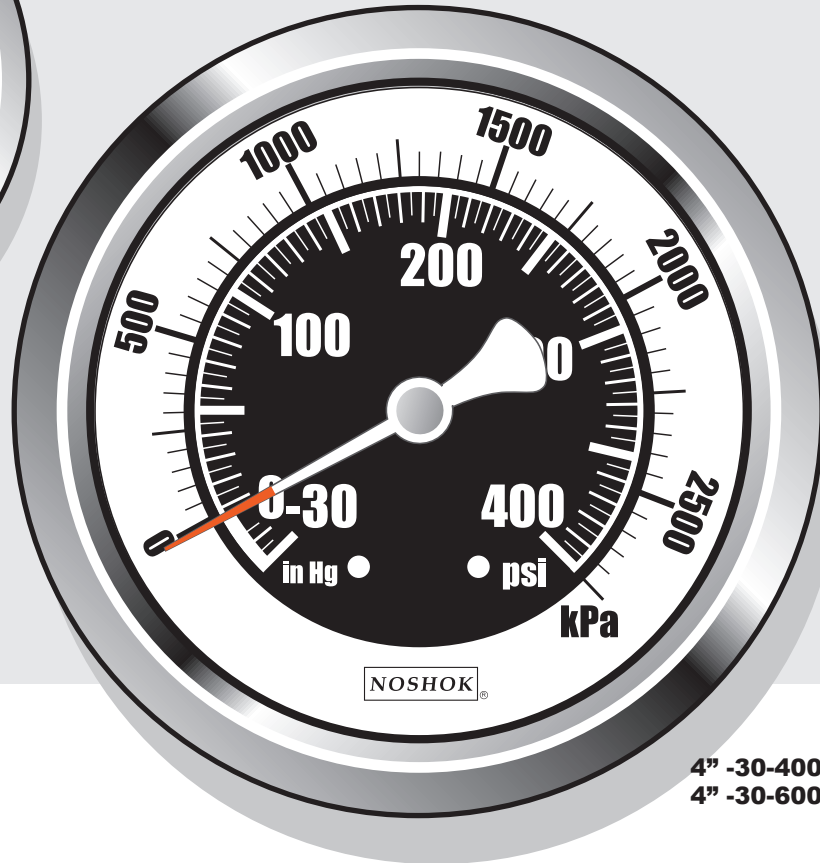


25.310.-1-2750kpa/psi

3" 0-400PSI with Metric Equiv.
3" -30-400PSI with Metric Equiv.
3" -30-600PSI with Metric Equiv.



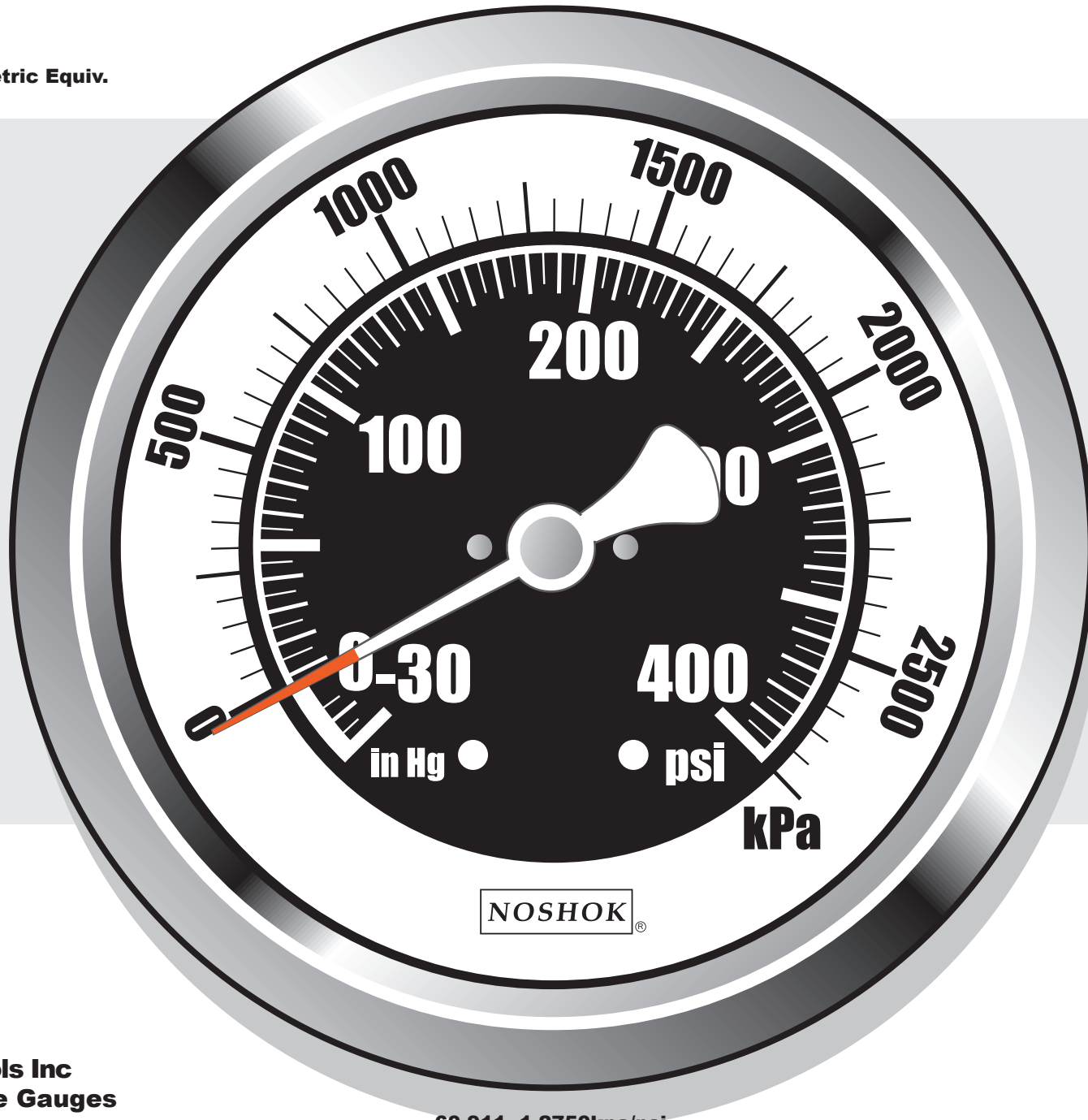
30.310.-1-2750kpa/psi



40.310.-1-2750kpa/psi

4" -30-400PSI with Metric Equiv.
4" -30-600PSI with Metric Equiv.

6" -30-400PSI with Metric Equiv.



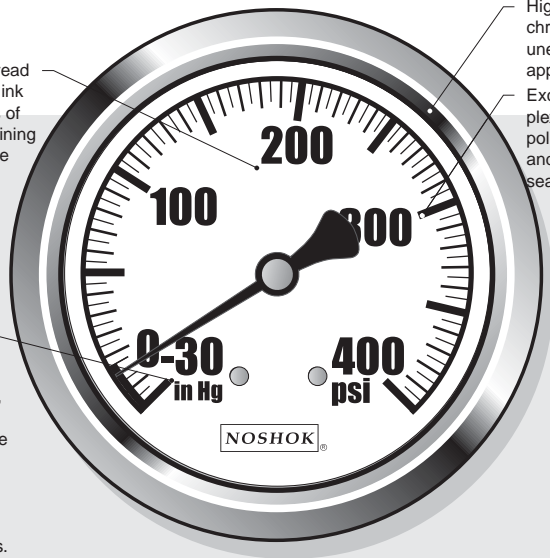
Innovative Controls Inc
6" Stainless Case Gauges

60.911.-1-2750kpa/psi



Bright, bold, easy-to-read dial with UV resistant ink withstands the effects of direct sunlight-maintaining its original appearance for years.

With a specified accuracy of +/- 1% full scale, Noshok gauges exceed ANSI, ISO, and NFPA standards, and are the most accurate in the emergency service industry. Accuracy is not compromised at extreme temperatures.



Highly polished and durable chrome plated bezel is unequalled in quality and appearance.

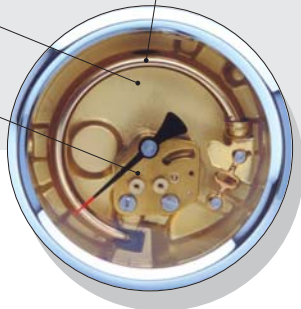
Exceptionally thick, molded plexiglas crystals are highly polished, scratch resistant, and feature a captive o-ring seal.

The robust heavy-wall bourdon tube and hand-polished brass and nickel silver movements are sized proportionately to each gauge insuring accuracy and minimal wear for the extended life of the gauge.

Vibration damping is achieved with a special synthetic glycerine fluid that fills the gauge.

The high grade glycerine also lubricates the internal movements and eliminates lens condensation, corrosion and other environmental incursions at temperatures from -40F to 160F.

Internals are precision machined with polished bearing surfaces.

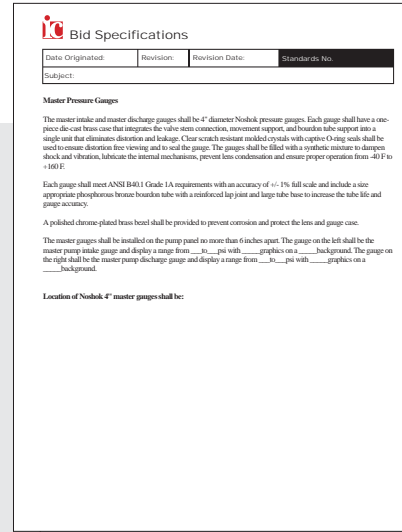


Brass Case Gauge



Zero-leak one piece brass casting integrates the case, stem, connection, and movements into a leak-free unit.

Unlike other gauges that require the sealing of multiple parts, this one-piece casting withstands the over-torquing of line fittings, severe vibration and shock, and leakage.



ic Bid Specifications

| Date Originated: | Revision: | Revision Date: | Standard's No. |
|------------------|-----------|----------------|----------------|
| | | | |

Subject:

Master Pressure Gauges

The master intake and master discharge gauges shall be 4" diameter Noshok pressure gauges. Each gauge shall have a one-piece die-cast brass case that integrates the valve stem connection, movement support, and bourdon tube support into a single unit that eliminates distortion and leakage. Clear scratch resistant molded crystals with captive O-ring seals shall be used to ensure distortion free viewing and to seal the gauge. The gauges shall be filled with a synthetic mixture to dampen shock and vibration, lubricate the internal mechanisms, prevent lens condensation and ensure proper operation from -40 F to +160 F.

Each gauge shall meet ANSI B401 Grade 1A requirements with an accuracy of +/- 1% full scale and include a size appropriate phosphorous bronze bourdon tube with a minimized top joint and larger tube base to increase the tube life and gauge accuracy.

A polished chrome-plated brass bezel shall be provided to prevent corrosion and protect the lens and gauge case.

The master gauges shall be installed on the pump panel no more than 6 inches apart. The gauge on the left shall be the master pump intake gauge and display a range from ___ to ___ psi with ___ graphics on a ___ background. The gauge on the right shall be the master pump-discharge gauge and display a range from ___ to ___ psi with ___ graphics on a ___ background.

Location of Noshok 4" master gauges shall be:

Bid specifications available:
Request from your
Rosenbauer dealer.

Innovative Controls Inc
Pressure Gauges
Features and Benefits





Noshok Pressure Gauge Warranty Policy

| | | | |
|---------------------------|-------------|----------------|-----------------------|
| Date Originated: 10/11/04 | Revision: A | Revision Date: | Standards No. 5000076 |
|---------------------------|-------------|----------------|-----------------------|

Noshok stands behind its reputation of meeting stringent testing and inspection requirements for each gauge prior to shipment. This, along with the remarkable built-in quality of our gauges, led us to one of the most innovative and confident moves in the emergency service industry - a five year to lifetime warranty.

Extended Rosenbauer Warranty for all Gauges:

Noshok will warrant all brass case liquid filled pressure gauges for a period of five years from the date of installation for the following:

- To be free from defects in material and workmanship.
- To remain within cataloged accuracy specifications. (including over-range due to gauge freeze-up)
- To operate within the published performance specifications.

Brass Case Gauge Lifetime Warranty:

Noshok will additionally warrant all brass case pressure gauges for life for the following:

- To maintain the integrity of the hermetically sealed case, therefore preventing leakage.
- To retain optical clarity of pressure gauge liquid fill, therefore preventing discoloration.

Noshok and Innovative Controls will, at its option, repair or replace the working parts of the damaged gauge without cost to our customers.



Warranty Claim Policy

| | | | |
|---------------------------|-------------|----------------|-----------------------|
| Date Originated: 10/12/03 | Revision: A | Revision Date: | Standards No. 5000021 |
|---------------------------|-------------|----------------|-----------------------|

If you would like to make a warranty claim and before returning potentially defective products, call Innovative Controls at 412-824-2264 and request our technical sales specialist.

Our professionally-trained technicians are prepared to handle your problem-related questions promptly and efficiently. Please be prepared to describe the problem in detail, which will help us resolve it quickly and effectively.

Innovative Controls maintains stock of new and remanufactured products ready for immediate delivery.

We are here to serve you! Innovative Controls is committed to continuous improvement, and we encourage your comments and suggestions. Good communication with our customers is important to us. Give us a call, We value your continued business.

Innovative Controls Inc.
Michael M. Michna, President



Noshok Mission

| | | | |
|---------------------------|-------------|-------------------------|-----------------------|
| Date Originated: 01/15/01 | Revision: B | Revision Date: 10/12/03 | Standards No. 5000022 |
|---------------------------|-------------|-------------------------|-----------------------|

Since its founding in 1967, Noshok has dedicated itself to providing industries with the most dependable, high quality, liquid filled pressure gauges in the world. Noshok remains committed to product excellence, accuracy, readability, and strength.

Noshok / Innovative Controls Partnership

In 1993, Noshok and Innovative Controls partnered to combine our commitment to the fire apparatus industry. Our goal is simple - provide an accurate, strong, reliable product to fire fighters. We supply the fire fighting industry with the finest and most dependable instruments available on the market. Our companies' collective resources supply instrumentation and control systems offering high performance without compromising the style of the apparatus. We take pride in our attention to detail, customizing our displays for each manufacturer. Noshok industrial pressure gauges are sold through more than 200 distributors worldwide. Innovative Controls is the exclusive distributor of Noshok fire apparatus pressure gauges, the finest gauges available. We are determined to become the undisputed leader in pump monitor controls, offering the broadest product line in the industry.

